

Touchkey Hotel Lock



TK-0815

LCD Screen Display
with
Room number
Battery status
Date & time
Welcome
Self-error detective



TK-0816

Main Features:

- Micro-wave, much more sensitive
- SS/PVD coating
- Material: Zinc Alloy
- Card type: Temic, Mifare
- Card reading: <0.4S
- Power: 4 AA batteries
- Static Power: <10uA
- Dynamic power: 200mA
- Low battery indication: 4.8V (still can be used for 50~100 times)
- Inductive distance: 3-5CM
- Working temperature: -30°C~80°C
- Working moisture: <95°C
- Anti-static: >15,000V, working stably under high static situation
- Door thickness: 30~65mm
- Packing: 10sets/ctn; 6sets/cnt; 8sets/ctn
- High quality SS or zinc alloy material; firm, solid and durable
- Override computer key for emergency, individual/master cylinder, self error detecting by LED and "beep"
- Integrated with PMS, Elevator, Parking, Swimming, POS, Public Doors..., our system works as one card system
- Integrated with wireless iMaid system, it realizes hotel wireless **online lock functions**



TK-005



TK-006



TK-007



TK-008

Touchkey Hotel Lock



TK-020

TK-021

Main Features:

- Micro-wave, much more sensitive
- SS/PVD coating
- Material: Stainless steel 304
- Card type: Temic, Mifare
- Card reading: <0.4S
- Power: 4 AA batteries
- Static Power: <10uA
- Dynamic power: 200mA
- Low battery indication: 4.8V (still can be used for 50~100 times)
- Inductive distance: 3-5CM
- Working temperature: -30°C~80°C
- Working moisture: <95°C
- Anti-static: >15,000V, working stably under high static situation
- Door thickness: 30~65mm
- Packing: 10sets/ctn; 6sets/cnt; 8sets/ctn
- High quality SS or zinc alloy material; firm, solid and durable
- Override computer key for emergency, individual/master cylinder, self error detecting by LED and "beep"
- Integrated with PMS, Elevator, Parking, Swimming, POS, Public Doors..., our system works as one card system
- Integrated with wireless iMaid system, it realizes hotel wireless online lock functions



TK-010



TK-111



TK-003



TK-004

Touchkey Hotel Lock



TK-024

Main Features:

- Micro-wave, much more sensitive
- SS/PVD coating
- Material: Stainless steel 304
- Card type: Temic, Mifare
- Card reading: <0.4S
- Power: 4 AA batteries
- Static Power: <10uA
- Dynamic power: 200mA
- Low battery indication: 4.8V (still can be used for 50~100 times)
- Inductive distance: 3-5CM
- Working temperature: -30°C~80°C
- Working moisture: <95°C
- Anti-static: >15,000V, working stably under high static situation
- Door thickness: 30~65mm
- Packing: 10sets/ctn; 6sets/cnt; 8sets/ctn
- High quality SS or zinc alloy material; firm, solid and durable
- Override computer key for emergency, individual/master cylinder, self error detecting by LED and "beep"
- Integrated with PMS, Elevator, Parking, Swimming, POS, Public Doors..., our system works as one card system
- Integrated with wireless iMaid system, it realizes hotel wireless **online lock functions**

TK-025



TK-051



TK-052



TK-019



TK-071

Touchkey Hotel Lock



TK-022



TK-023

Main Features:

- Micro-wave, much more sensitive
- SS/PVD coating
- Material: Stainless steel 304 / Zinc Alloy
- Card type: Temic, Mifare
- Card reading: <0.4S
- Power: 4 AA batteries
- Static Power: <10uA
- Dynamic power: 200mA
- Low battery indication: 4.8V (still can be used for 50~100 times)
- Inductive distance: 3-5CM
- Working temperature: -30°C~80°C
- Working moisture: <95°C
- Anti-static: >15,000V, working stably under high static situation
- Door thickness: 30~65mm
- Packing: 10sets/ctn; 6sets/cnt; 8sets/ctn
- High quality SS or zinc alloy material; firm, solid and durable
- Override computer key for emergency, individual/master cylinder, self error detecting by LED and "beep"
- Integrated with PMS, Elevator, Parking, Swimming, POS, Public Doors..., our system works as one card system
- Integrated with wireless iMaid system, it realizes hotel wireless **online lock functions**



TK-072



TK-073



TK-090



TK-091

Touchkey Hotel Lock

Split Models



TK-F086



TK-F085

Main Features:

- Micro-wave, much more sensitive
- SS/PVD coating
- Material: Stainless steel 304 / Zinc Alloy
- Card type: Temic, Mifare
- Card reading: <0.4S
- Power: 4 AA batteries
- Static Power: <10uA
- Dynamic power: 200mA
- Low battery indication: 4.8V (still can be used for 50~100 times)
- Inductive distance: 3-5CM
- Working temperature: -30°C~80°C
- Working moisture: <95°C
- Anti-static: >15,000V, working stably under high static situation
- Door thickness: 30~65mm
- Packing: 10sets/ctn; 6sets/cnt; 8sets/ctn
- High quality SS or zinc alloy material; firm, solid and durable
- Override computer key for emergency, individual/master cylinder, self error detecting by LED and "beep"
- Integrated with PMS, Elevator, Parking, Swimming, POS, Public Doors..., our system works as one card system
- Integrated with wireless iMaid system, it realizes hotel wireless online lock functions



TK-0811



TK-0812



TK-055



TK-066

Touchkey Lock Accessories

System Diagram



TK software



TK Encoder



RF Card



TK Lock



TK Lift Reader



TK Reader



TK Energy Saver



TK Event Tool

Lock Parts



M20



M21



Sauna Locker



TK-S10



TK-S11



TK-S12



TK-S13



TK-16



TK-17

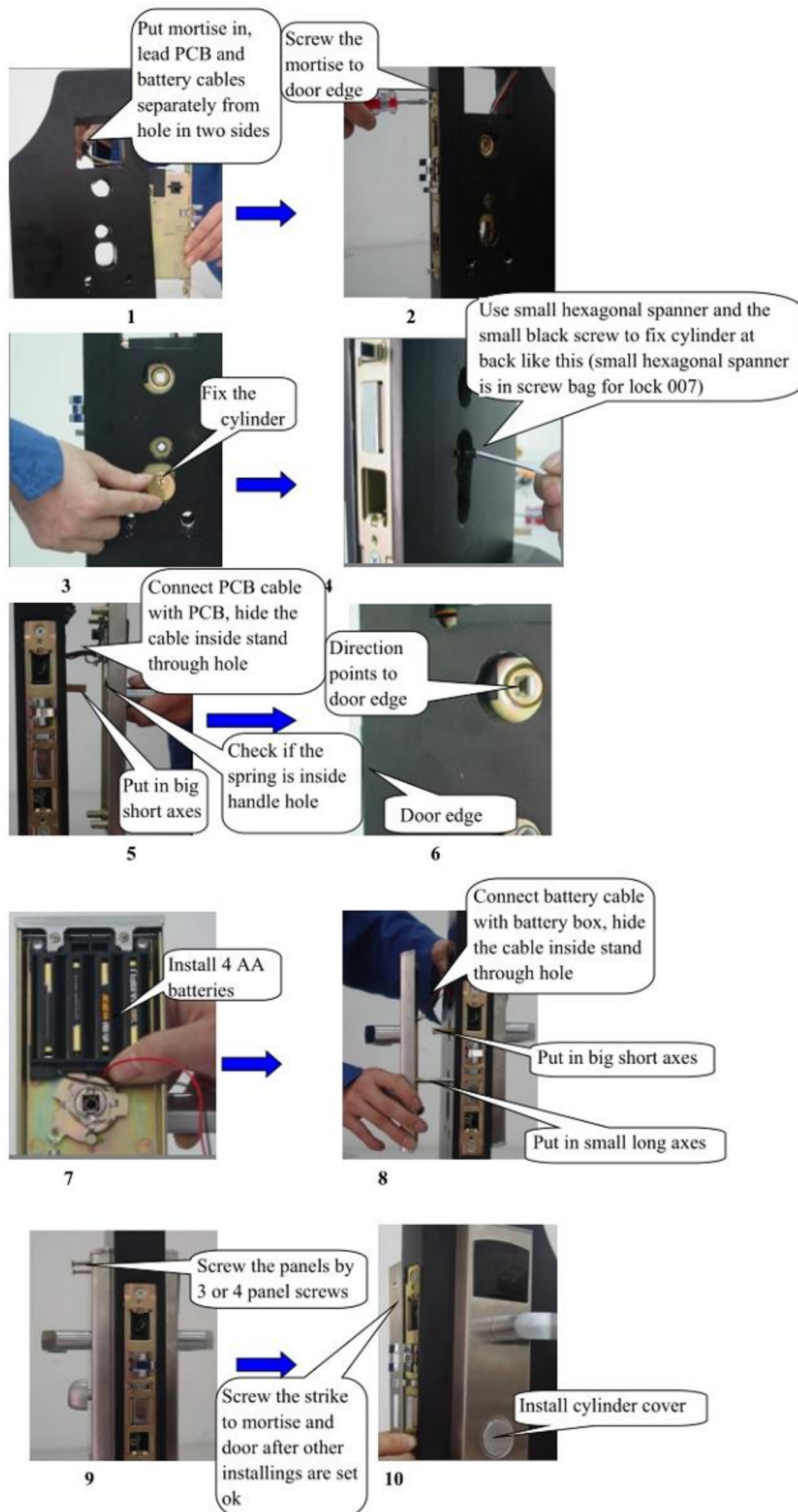


TK-B02



TK-B05

Touckey Lock Installation



Note:

1. All handle holes should be with springs in.
2. Don't let panel edge cut the wires when fixing panels together by screws, so please hide the cable well inside stand through hole.
3. Please pay attention to the direction issue in picture 6.
4. If the deadbolt is hard to turn, please loose the screws which fix panels, then adjust panels' position to be properly upright unless you feel it is easy to turn deadbolt.
5. If the handle is free or rotating always and you can't open the lock after card works on reader, then please recheck if the big short axes is inside the mortise hole?